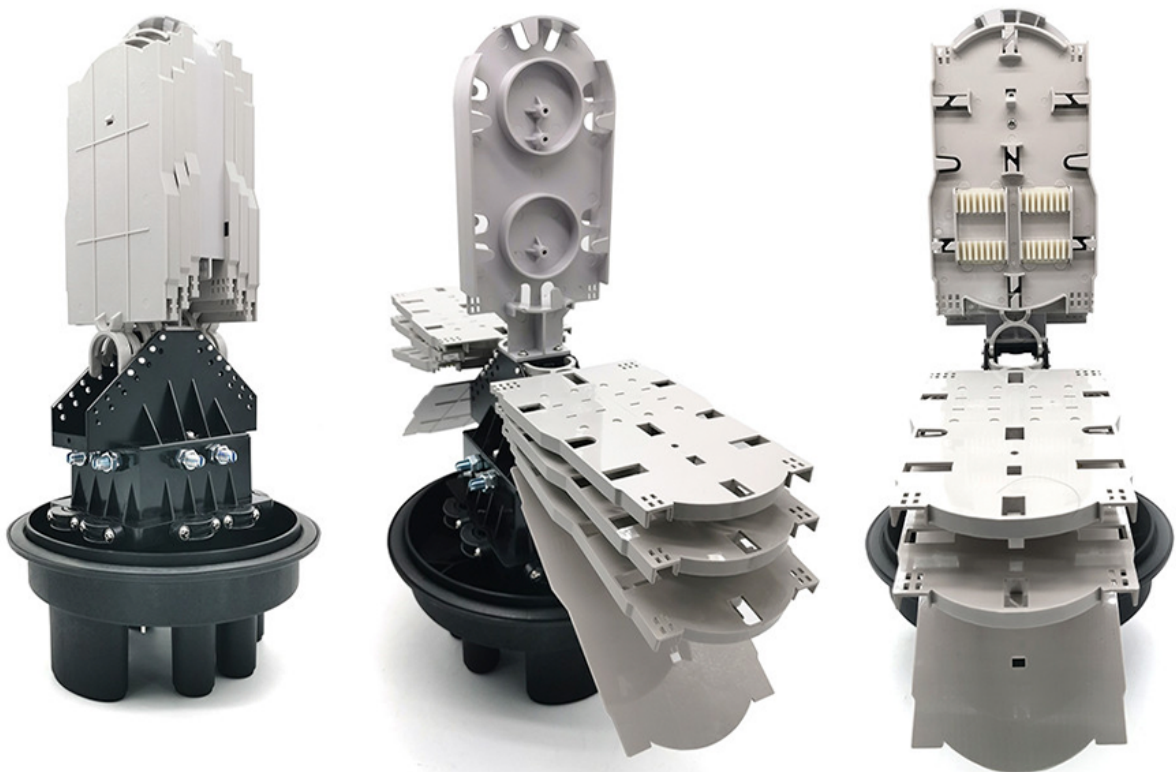


- Fiber Optic Splice Closure 1 Oval + 6 Round Port GJS-D023



**Technical
Parameter**

Material	Pp	Dimension	Height: 515 mm Diameter: 310 mm
Max Capacity	288 fibers, Ribbon 864 cores	Splice Tray Qty	12 Pcs 24 cores sigle fiber
Splice Try Material	ABS	Cable Port	1 Oval for branch cable 38 mm + 6 round ports
High Light	Fiber optic splice enclosure Fiber optic join closure		

Product Description

1. General Introduction

GJS-D023 can be used for connecting and protecting single core or bunch cables.

GJS-D023 can be used for connecting and branching cables in your network projects

GJS-D023 can be used in aerial, underground, direct buried, wall- mounting, hand hole and duct mounting in your network projects

2. Features

1. For aerial, buried, wall and pipe wall people use wells
2. Ring using a special material that can be repeatedly opened, re-use
3. Splice tray easy to use page design
4. Quick way to make use of open sealed maintenance easier
5. Valve and grounding devices can be installed
6. Advanced internal structure design
7. Easy to re-enter, it never requires re-entry tool it

3. Application

The Scope of application is :aerial,underground,pipeline,hand hole.The ambient temperature ranges from-40 to 65 °C.

3. Product Guide

Specification

Size: mm L×W×H	Cable ports	Cable Diameter	Max. Capacity	Core capacity per tray
515×310	7	φ38×1	Bunchy: 288 Ribbon: 864	Bunch: 24-288(cores) Ribbon: up to 864(cores)

Trays

Model No.	Capacity		Size: mm L×W×H
FOST003	Bunchy	single: 24 cores	120×196×10
	Ribbon	In normal: 6 pcs max.:12 pcs	

Main Component

No.	Name of components	Quantity	Usage
1	FOSC(cover)	1 Set	Protecting fiber cable splices in whole
2	Fiber optic splice tray (FOST)		Fixing heat shrinkable protective sleeve and holding fibers
3	Fiber holding tray	1 Pcs	Holding fibers with protective coat
4	Base	1 Set	Fixing internal and external structure
5	Plastic hoop	1 Set	Fixing between FOSC cover and base
6	Seal fitting	1 Set	Sealing between FOSC cover and FOSC bottom

Main accessories and special tools

7	Heat shrinkable protective sleeve(single)and Branching clip		Protecting fiber splices	Configuration as per capacity
8	Heat shrinkable protective sleeve		Protecting fiber splices	Configuration as per capacity
9	Nylon tie		Fixing fiber with protective coat	Configuration as per capacity
10	Earthing wire	1 Pcs	Putting through between earthing device	
11	Abrasive cloth	1 Pcs	Scratching fiber calbes	
12	Labeling paper	1 Pcs	Labeling fiber	
13	Metal hoop	1 Set	For wall mounting and pole hugging	
14	Heat shrinkable fixing sleeve (mass)		Fixing and sealing mass of fiber cable	Configuration as per requirement
15	Aluminum-foil paper	1 Pcs	Protect the bottom of FOSC	



Accessories: Dome, base, clamp, pressure test air valve, grounding wire, desiccant, heat shrinkable protective sleeve, branch wrench, pole mount kits, nylon tie, label mark, user manual, heat shrink tubes, insulation tape, sand paper, etc.

Package: 4PCS/ CARTON BOX, CARTON SIZE:58×58×54.5CM, 15.6KG/CARTON